



NOTICE OF INTENDED INSTALLATION AND USE

ROSEN ENTERTAINMENT SYSTEMS VIDEO PRODUCTS ARE NOT INTENDED FOR VIEWING BY THE DRIVER, AND ARE TO BE INSTALLED ONLY TO BE VIEWED BY REAR-SEAT OCCUPANTS.

IMPROPER INSTALLATION COULD DISTRACT THE DRIVER OR INTERFERE WITH SAFE OPERATION OF THE VEHICLE, WHICH COULD RESULT IN SERIOUS INJURY OR DEATH, AND COULD ALSO VIOLATE STATE LAW.

ROSEN ENTERTAINMENT SYSTEMS DISCLAIMS ANY LIABILITY FOR ANY BODILY INJURY OR PROPERTY DAMAGE THAT MAY RESULT FROM ANY IMPROPER OR UNINTENDED INSTALLATION AND/OR USE.

	<u>STOP</u> Damage to the vehicle may occur Do not proceed until process has been completed
	<u>CAUTION</u> Process must be carefully observed in order to reduce the risk of damage to the accessory or vehicle
	<u>CRITICAL</u> Process must be carefully observed in order to ensure a quality installation
	<u>TOOLS and EQUIPMENT</u> Specific tools and equipment recommended for this process
	<u>SAFETY RISK</u> Observe safe practices, this process can be dangerous and there is a risk of personal injury
	<u>TESTING and TROUBLESHOOTING</u> Content specific testing and troubleshooting points

Installation Guide AV7700

PREPARING FOR THE INSTALLATION

Before you start, please read these critical steps below

STEP 1

**BEFORE YOU START THE
INSTALLATION,
READ THIS GUIDE!**



VISIT

Rosen Dealer Central

For the latest Updates, Corrections and Technical
Tips about this product and installation

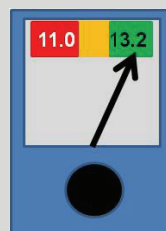
www.RosenDealerCentral.com



CHECK THE BATTERY

Test the battery voltage to make sure it's fully
charged to a minimum of 12.8 VDC

This only takes seconds and can save hours of
troubleshooting later.



TURN THE VEHICLE

OFF

Keep the Vehicle Off during the installation to
avoid setting various Vehicle Fault sensors



Keep the Vehicle OFF during the installation

Failure to follow this may cause the AIRBAG
FAULT SENSOR to become enabled. Dealer
Service Departments charge a significant fee to
reset the Fault Sensor.



Installation Guide AV7700

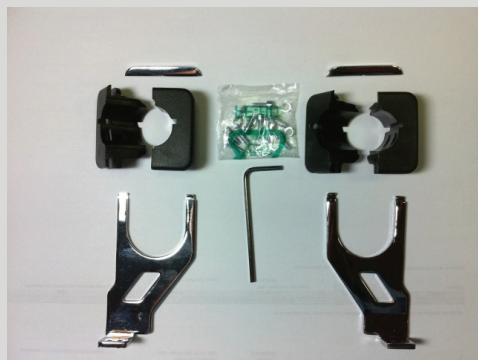
Prepare Electronics

You will need to install the vehicle specific mounting brackets.
The following steps will guide you through this process

Note: Mercedes-Benz GL/ML/R installation shown

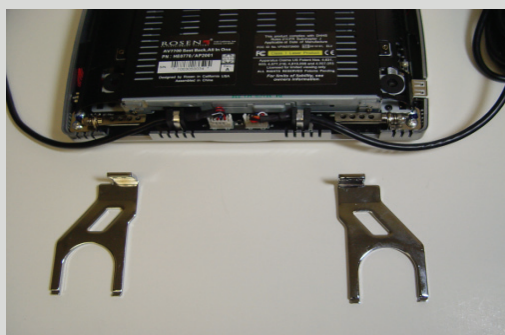
STEP 2

Locate hardware mounting kit.
(Part# MB100B contents shown)



Locate clean, non-abrasive working surface to
prepare the headrest units.

Determine the proper mounting bracket positions
according to your vehicle application. See Below



Attach mounting brackets to electronics by using 4 supplied screws
Spacing will vary by application.
Use image below as a reference.



Note: Mercedes-Benz Vehicle shown = Position "A" @ 150mm



Installation Guide AV7700

Routing Cable Through Headrest Bracket

You will need to route the cable through the headrest bracket. The following steps will guide you through this process

Note: Mercedes-Benz GL/ML/R installation shown

Place the AV7700 electronics system on clean flat surface.

Route cables through rectangular slots in mounting brackets. (Shown Right)

Note: Critical process for proper cable routing during installation



STEP 3



Attach Color-Matched Back Covers

Attach back covers to AV7700 electronics

Each AV7700 kit is supplied with color-matched back covers



Align back cover with AV7700 mounting holes and snap into place



Installation Guide AV7700

Installing AV7700 Electronics

You will need to install the AV7700 electronics and route the cable through the seat backs. The following steps will guide you through this process.

Note: Mercedes-Benz GL/ML/R installation shown

STEP 5

Route cables into seat along post guides.
Cables are Left/Right specific based on mounting orientation of electronics
(Both cables will be black with connection points being color specific. IE: Black & Grey)



Locate mounting bushings.
Bushings are labeled specific for Left or Right for each post guide. See next step



Once cables have been routed into seat, insert mounting bushings.

A = Left side of post guide

B = Right side of post guide

NOTE: Do NOT pinch cables



Both mounting bushings installed.

Caution: Do NOT pinch cables



Mount AV7700 electronics into mounting bushings as shown while pulling excess slack from cables



Installation Guide AV7700

Steps For Mounting Electronics Into Bushings

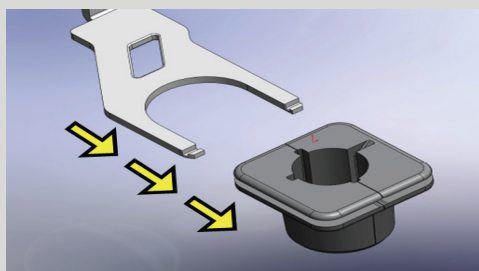
Below are steps to lock mounting brackets into bushings

Note: Mercedes-Benz GL/ML/R installation shown

STEP 6

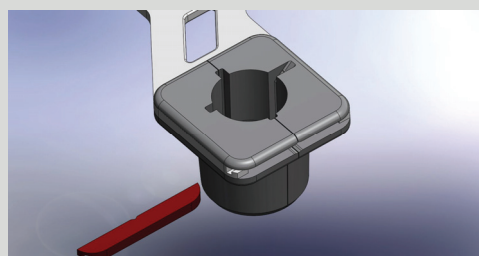
Step A

Slide mounting brackets into bushings



Step B

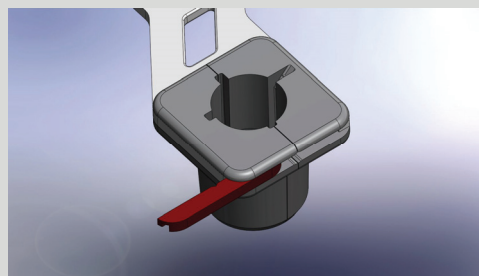
Locate locking pin



Step C

Insert locking pin by sliding through both locking positions on bracket

Note: Moderate force may be needed to engage locking pin



Step D

Locking pin fully inserted

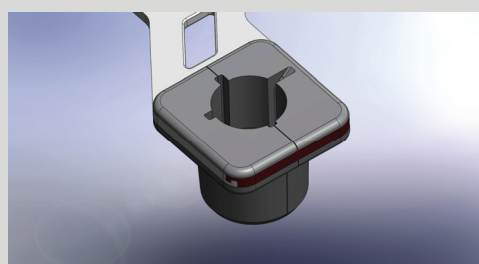


Image of both locking pins and electronics fully installed



Installation Guide AV7700

Routing Harnesses and Making Connections

You will need to route the harnesses and make the power connections to the vehicle.

Proper routing of cables is crucial to making sure cables do not get damaged

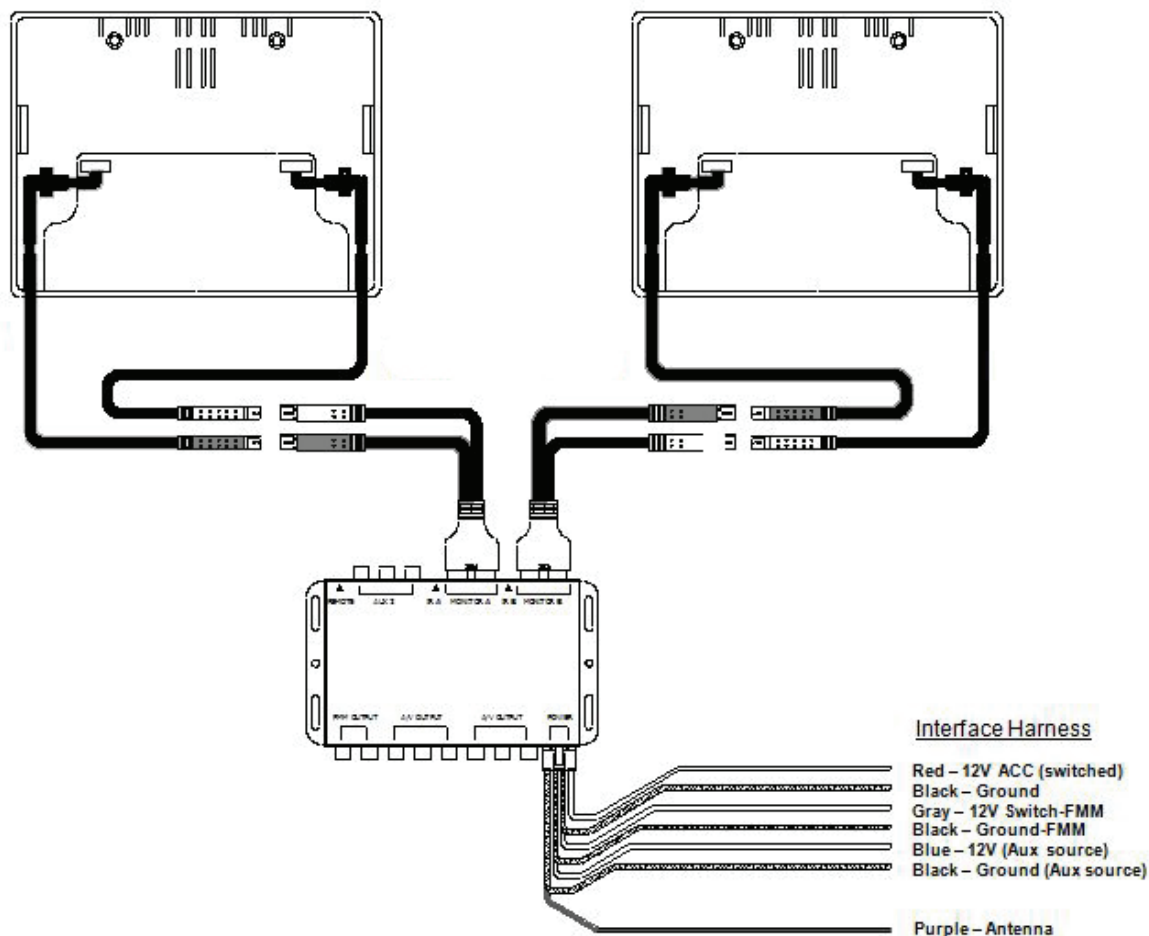
STEP 7

This system requires a minimum of 12V (+) ACC Switched and Ground (-) to operate. The 12V (+) ACC Switched source must be capable of supplying a minimum of 7A.



Wiring Diagram

STEP 8



Installation Guide AV7700

Initial Test, Reassembly, and Pre-delivery Re-test

You will need to fully test the system to ensure it is working and connected to the vehicle properly.
The following steps will guide you through

STEP 9

Step 1: INITIAL TEST (Do this BEFORE you reassemble any trim panels)

- a. Reconnect the vehicle battery if needed
- b. Install batteries into the remote control, headphones and game controllers
- c. Start the vehicle (ensure that it is safe to do so, there are no tools or people under the hood)
- d. Perform the following steps on each headrest to ensure proper operation:
 - Close and re-open the unit several times
 - With the display open, insert a DVD (in good condition) and select play
 - Check the audio on the IR headphones
 - Press the Speaker button and adjust the vehicle radio frequency as needed to check the audio
 - Select and play the internal games
 - Eject the disc
 - Turn off the vehicle and wait for the unit to turn off
- e. If the system does not function properly, reset the system by pressing and holding the reset button located near the eject button

Step 2: REINSTALL all trim panels removed during the installation using care not to damage any harnesses

Step 3: PRE-DELIVERY AND RE-TEST

- a. Start the vehicle (ensure that it is safe to do so, there are no tools or people under the hood)
- b. Perform the following steps
 - Insert a DVD (in good condition) and select play
 - Re-check IR headphones and FMT audio
 - Eject the disc
 - Remove the protective films and clean the unit as needed
- c. Place the Owners Information package in the glove compartment
- d. Place the IR headphones, remote control and game controller in a convenient location



Installation Guide AV7700

Installer Settings

The steps below will show you how to access the installer settings menu

STEP 10

To access install setup menu: use the remote control, press
“EJECT-ENTER-1-1-2-0”

- To change AUX 2 input labeling, highlight AUX 2 label and scroll left/right using arrows.
- To select EXT FMM, highlight EXT FMM and select on.
- POD ADDR is used to manually set pod address
Auto→ address is based on which port the pod is plugged into.
- Selecting A or B allows you to manually set the pod's address
When manually selecting POD ADDR, an OSD will appear on opposite pod displaying what pod it will be



Specifications

Supply Voltage : 12V (+) ACC negative ground system, 11-16VDC operating range
Current Consumption : 7A max operating
Video Signal : Composite video 1.0Vp-p 75 , NTSC/PAL
Audio Signal : Audio Output : 2Vrms, line output
IR Audio Signal : Channel A= 2.3 MHZ / 2.8 MHZ and Channel B= 3.2 MHZ / 3.8 MHZ
Discs Played : (1) 5" (12cm) DVD-VIDEO Disc
(2) Compact Disc (CD-DA/CD-R/CD-RW/MP3)
Operating Temperature : 0C to +60C

Note: Specifications and designs are subject to modification without notice.



Troubleshooting

No headphone audio

The Headphone audio should be preset at all times, unless the MUTE is set to on

Solution: Press the MUTE Button to enable the audio and turn the MUTE OFF.

Solution: Confirm the headphones have fresh batteries and are turned on, and the ON LED Indicator is Illuminated.

Missing Channel B Audio

System includes a monitor A and monitor B. Monitor A is channel “A” on headphones and monitor B is channel “B” on headphones. If audio is not present, check the following.

Solution: Check A/B switch on headphones.

Solution: Reset the system

Solution: Check all cable connections



Installation Guide AV7700

Service and Optional Parts List

<u>Part Number</u>	<u>Description</u>	<u>Part Number</u>	<u>Description</u>
AP1003	Interface Module	AP1011	Harness, AUX IN
AP1008	Harness, Power	AP1043	Remote Control
AP1010	Harness, Interface	AP1015	Mounting Bracket
AP1007	Control, Game System	AP2001	Monitor/Electronic w/ DVD
AC3640	Headphones, 2 CH. Fold Flat	AP2002	Quick Start Guide
AP2003	Owner's Manual	AP2004	Installation Guide
AP1029	Warranty Card	AP1017	Cable Routing Tool
AP2020	Harness, Interface (Black w/ Gray)		
AP1021	Harness, Interface (Black w/ Black)		



www.RosenEntertainment.com