




NOTICE OF INTENDED INSTALLATION AND USE

ROSEN ENTERTAINMENT SYSTEMS VIDEO PRODUCTS ARE NOT INTENDED FOR VIEWING BY THE DRIVER, AND ARE TO BE INSTALLED ONLY TO BE VIEWED BY REAR-SEAT OCCUPANTS.

IMPROPER INSTALLATION COULD DISTRACT THE DRIVER OR INTERFERE WITH SAFE OPERATION OF THE VEHICLE, WHICH COULD RESULT IN SERIOUS INJURY OR DEATH, AND COULD ALSO VIOLATE STATE LAW.

ROSEN ENTERTAINMENT SYSTEMS DISCLAIMS ANY LIABILITY FOR ANY BODILY INJURY OR PROPERTY DAMAGE THAT MAY RESULT FROM ANY IMPROPER OR UNINTENDED INSTALLATION AND/OR USE.

	<u>STOP</u> Damage to the vehicle may occur Do not proceed until process has been completed
	<u>CAUTION</u> Process must be carefully observed in order to reduce the risk of damage to the accessory or vehicle
	<u>CRITICAL</u> Process must be carefully observed in order to ensure a quality installation
	<u>TOOLS and EQUIPMENT</u> Specific tools and equipment recommended for this process
	<u>SAFETY RISK</u> Observe safe practices, this process can be dangerous and there is a risk of personal injury
	<u>TESTING and TROUBLESHOOTING</u> Content specific testing and troubleshooting points

Installation Guide AV7700

PREPARING FOR THE INSTALLATION

Before you start, please read these critical steps below

STEP 1

**BEFORE YOU START THE
INSTALLATION,
READ THIS GUIDE!**



VISIT

Rosen Dealer Central

For the latest Updates, Corrections and Technical
Tips about this product and installation

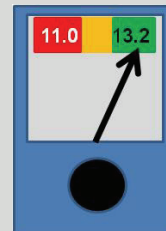
www.RosenDealerCentral.com



CHECK THE BATTERY

Test the battery voltage to make sure it's fully
charged to a minimum of 12.8 VDC

This only takes seconds and can save hours of
troubleshooting later.



TURN THE VEHICLE

OFF

Keep the Vehicle Off during the installation to
avoid setting various Vehicle Fault sensors



Keep the Vehicle OFF during the installation

Failure to follow this may cause the AIRBAG
FAULT SENSOR to become enabled. Dealer
Service Departments charge a significant fee to
reset the Fault Sensor.



Installation Guide AV7700

Prepare Electronics

You will need to install the vehicle specific mounting brackets.
The following steps will guide you through this process

Note: 2011 Jeep Grand Cherokee Shown

STEP 2

Locate hardware mounting kit.
(Part# CY100B contents shown)



Locate clean, non-abrasive working surface to
prepare the headrest units and proceed to
mount brackets.

Proper mounting bracket position is at 150mm
spacing which is shown below.
See Below for more details



Attach mounting brackets to electronics by using 4 supplied screws
Spacing for this application will be 150mm.
Use image below as a reference.



150mm Spacing



= Screw Location



Installation Guide AV7700

Routing Cable Through Headrest Bracket

You will need to route the cable through the headrest bracket. The following steps will guide you through this process

Note: 2011 Jeep Grand Cherokee Shown

STEP 3

Place the AV7700 electronics system on clean flat surface.

Route cables through rectangular slots in mounting brackets. (Shown Right)

Note: Critical process for proper cable routing during installation



Attach Color-Matched Back Covers

Attach back covers to AV7700 electronics

STEP 4

Each AV7700 kit is supplied with color-matched back cover based on application ordered



Align back cover with AV7700 mounting holes and snap into place



Installation Guide AV7700

Steps For Assembling Bushings

Below are steps to prepare bushings for installation into vehicle

Note: 2011 Jeep Grand Cherokee Shown

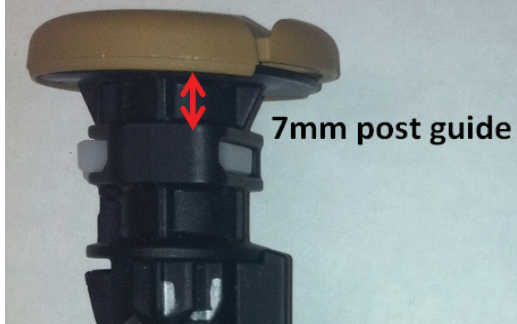
STEP 5

Step A

Push down on seat material around post guide (shown below) to determine if locking tabs need to be removed or if they need to remain intact.

(Use steps below to determine what mods need to be done based on vehicle)

Bushing tabs need to be removed (Jeep)

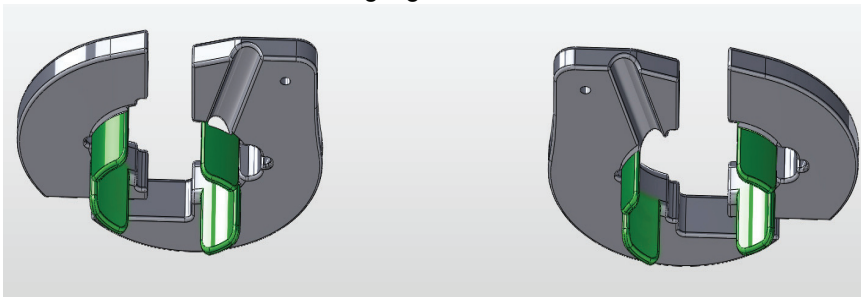


Bushing tabs DO NOT need to be removed.
(Dodge/Chrysler vehicles)



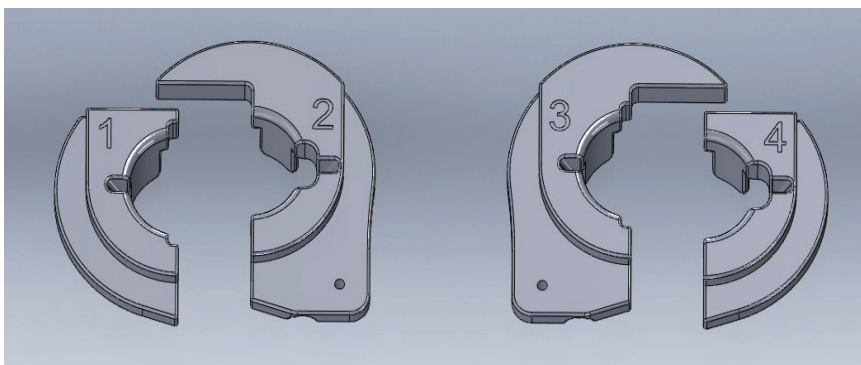
Step B

Remove tabs as needed based on your vehicle's post guide dimensions.
Tabs highlighted in Green



Step C

Identify all 4 bushings. Notice that each piece is numbered. 1-4



Installation Guide AV7700

Installing AV7700 Electronics

You will need to install the AV7700 electronics and route the cable through the seat backs. The following steps will guide you through this process.

Note: 2011 Jeep Grand Cherokee Shown

STEP 6

Pull at bottom of seatback to remove.



CAUTION

Seatback released



CAUTION

Seatback removed













CAUTION






Installation Guide AV7700

<p>Back of seat showing SRS headrest cable</p> <p><u>Caution: Do NOT unplug this cable at any time</u></p>		
<p>Both seatbacks removed</p>		
<p>Use long zip tie to route cable into seat. Go forward and route between seat frame and front seat foam</p>		
<p>Cables routed</p>		
<p>Assemble bushings and install as shown at right.</p> <p>Bushings 1 & 2 are for left post guide</p> <p>Bushings 3 & 4 are for right post guide</p>		
<p>Assemble bushings and install as shown at right.</p>		

Installation Guide AV7700

<p>AV7700 electronics seated in bushings that were assembled in previous step.</p>		
<p>Lock in AV7700 electronics using small set screws included in hardware package.</p>		
<p>Locate proper power source underneath passenger seat.</p> <p>14 gauge pink w/ green stripe is 12volt switched 12 gauge black for ground</p>		
<p>Power and ground shown at right</p>		
<p>Mount interface module underneath passenger seat</p>		

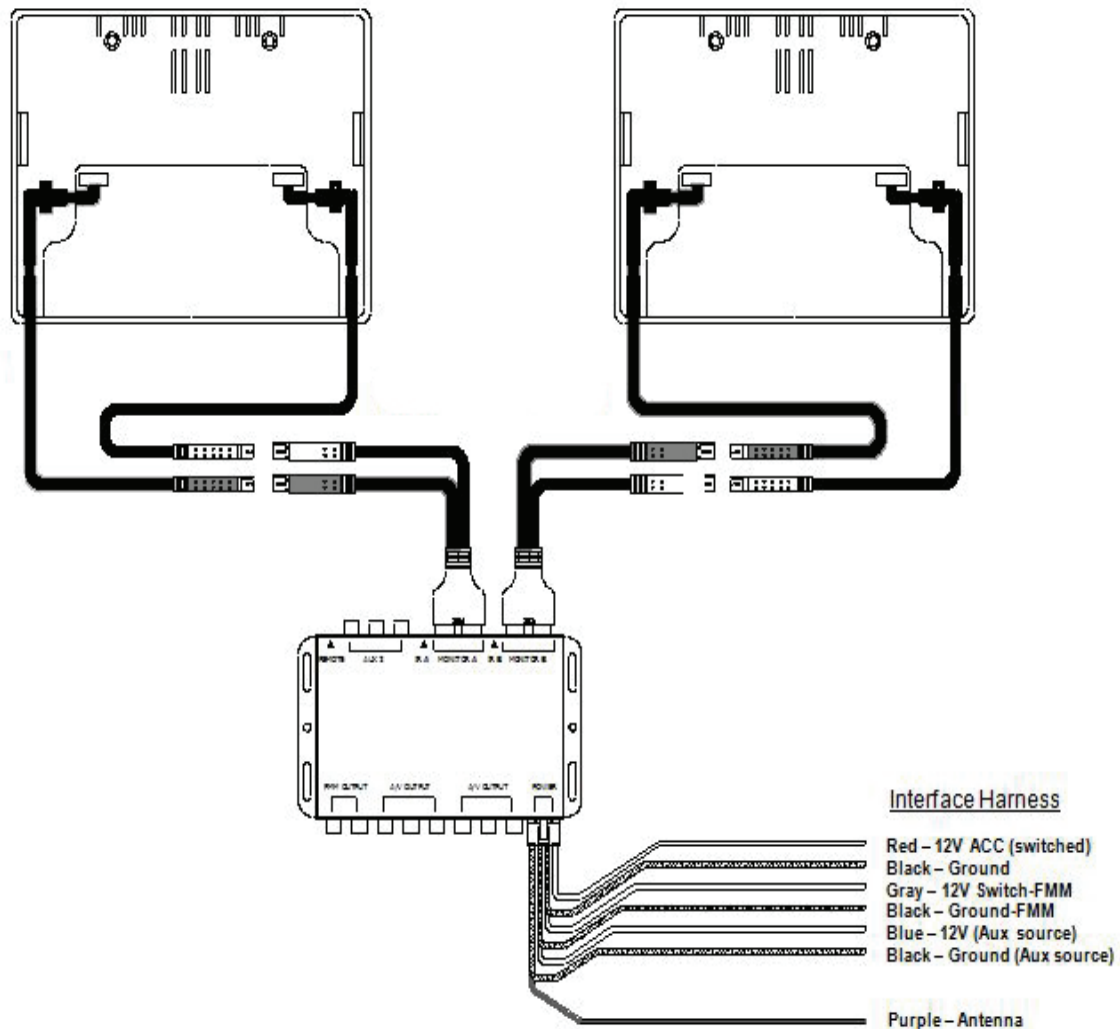
Installation Guide AV7700

<p>Test System for full functionality</p>		
<p>Install Complete</p>		
<p>Routing Harnesses and Making Connections</p> <p>You will need to route the harnesses and make the power connections to the vehicle.</p> <p>Proper routing of cables is crucial to making sure cables do not get damaged</p>		<p>STEP</p> <p>7</p>
<p>This system requires a minimum of 12V (+) ACC Switched and Ground (-) to operate. The 12V (+) ACC Switched source must be capable of supplying a minimum of 7A.</p>		

Installation Guide AV7700

Wiring Diagram

STEP 8



Initial Test, Reassembly, and Pre-delivery Re-test

You will need to fully test the system to ensure it is working and connected to the vehicle properly.
The following steps will guide you through

STEP 9

Step 1: INITIAL TEST (Do this BEFORE you reassemble any trim panels)

- a. Reconnect the vehicle battery if needed
- b. Install batteries into the remote control, headphones and game controllers
- c. Start the vehicle (ensure that it is safe to do so, there are no tools or people under the hood)
- d. Perform the following steps on each headrest to ensure proper operation:
 - Close and re-open the unit several times
 - With the display open, insert a DVD (in good condition) and select play
 - Check the audio on the IR headphones
 - Press the Speaker button and adjust the vehicle radio frequency as needed to check the audio
 - Select and play the internal games
 - Eject the disc
 - Turn off the vehicle and wait for the unit to turn off
- e. If the system does not function properly, reset the system by pressing and holding the reset button located near the eject button

Step 2: REINSTALL all trim panels removed during the installation using care not to damage any harnesses

Step 3: PRE-DELIVERY AND RE-TEST

- a. Start the vehicle (ensure that it is safe to do so, there are no tools or people under the hood)
- b. Perform the following steps
 - Insert a DVD (in good condition) and select play
 - Re-check IR headphones and FMT audio
 - Eject the disc
 - Remove the protective films and clean the unit as needed
- c. Place the Owners Information package in the glove compartment
- d. Place the IR headphones, remote control and game controller in a convenient location



Installation Guide AV7700

Installer Settings

The steps below will show you how to access the installer settings menu

STEP 10

To access install setup menu: use the remote control, press
“EJECT-ENTER-1-1-2-0”

- To change AUX 2 input labeling, highlight AUX 2 label and scroll left/right using arrows.
- To select EXT FMM, highlight EXT FMM and select on.
- POD ADDR is used to manually set pod address
Auto→ address is based on which port the pod is plugged into.
- Selecting A or B allows you to manually set the pod's address
When manually selecting POD ADDR, an OSD will appear on opposite pod displaying what pod it will be



Specifications

Supply Voltage : 12V (+) ACC negative ground system, 11-16VDC operating range
 Current Consumption : 7A max operating
 Video Signal : Composite video 1.0Vp-p 75 , NTSC/PAL
 Audio Signal : Audio Output : 2Vrms, line output
 IR Audio Signal : Channel A= 2.3 MHZ / 2.8 MHZ and Channel B= 3.2 MHZ / 3.8 MHZ
 Discs Played : (1) 5" (12cm) DVD-VIDEO Disc
 (2) Compact Disc (CD-DA/CD-R/CD-RW/MP3)
 Operating Temperature : 0C to +60C

Note: Specifications and designs are subject to modification without notice.



Troubleshooting

No headphone audio

The Headphone audio should be preset at all times, unless the MUTE is set to on

Solution: Press the MUTE Button to enable the audio and turn the MUTE OFF.

Solution: Confirm the headphones have fresh batteries and are turned on, and the ON LED Indicator is Illuminated.

Missing Channel B Audio

System includes a monitor A and monitor B. Monitor A is channel “A” on headphones and monitor B is channel “B” on headphones. If audio is not present, check the following.

Solution: Check A/B switch on headphones.

Solution: Reset the system

Solution: Check all cable connections



Installation Guide AV7700

Service and Optional Parts List

<u>Part Number</u>	<u>Description</u>	<u>Part Number</u>	<u>Description</u>
AP1003	Interface Module	AP1011	Harness, AUX IN
AP1008	Harness, Power	AP1043	Remote Control
AP1010	Harness, Interface	AP1015	Mounting Bracket
AP1007	Control, Game System	AP2001	Monitor/Electronic w/ DVD
AC3640	Headphones, 2 CH. Fold Flat	AP2002	Quick Start Guide
AP2003	Owner's Manual	AP2004	Installation Guide
AP1029	Warranty Card	AP1017	Cable Routing Tool
AP2020	Harness, Interface (Black w/ Gray)	CY100B	Hardware Kit, Black
AP1021	Harness, Interface (Black w/ Black)	CY100G	Hardware Kit, Grey
		CY100T	Hardware Kit, Tan



www.RosenEntertainment.com